



6 Rogart Terrace, Pontypridd, CF37 3BH

£300,000

Located on Rogart Terrace, Pontypridd, this spacious end-terraced house presents an excellent opportunity for families and individuals alike. Boasting a generous plot, the property features well-maintained gardens laid to lawns, providing a delightful outdoor space for relaxation and recreation. With ample off-road parking available for numerous vehicles, convenience is at the forefront of this home.

Inside, the house comprises three inviting bedrooms, perfect for restful nights and personal retreats. The layout includes three reception rooms, offering versatile spaces that can be tailored to your needs, whether for entertaining guests, creating a home office, or enjoying family time. A sunroom adds a touch of brightness, allowing natural light to flood in and creating a warm atmosphere throughout the day.

Situated just minutes from the town centre and main roads, this property enjoys a prime location that combines the tranquility of suburban living with easy access to local amenities and transport links. This end-terraced house is not just a home; it is a lifestyle choice that offers both comfort and convenience in a sought-after area. Don't miss the chance to make this delightful property your own.

Entrance Hall



Double glazed entrance door, coved ceiling, staircase to first floor.

Living Room 13'5" x 12'11" (4.09 x 3.96)



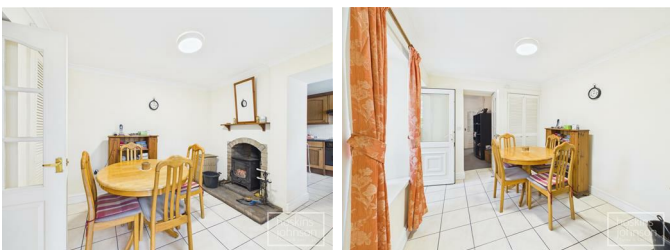
Double glazed bay window to front, coved ceiling, log burner.

Sitting Room 12'10" x 11'5" (3.92 x 3.48)



Window overlooking sunroom, coved ceiling.

Dining Room 9'10" x 8'11" (3.02 x 2.73)



Window overlooking sunroom, tiled floor, coved ceiling, log burner, understairs storage.

Sun Room 11'1" x 10'4" (3.40 x 3.15)



Double glazed throughout with windows overlooking the garden, doors to front and rear, tiled floor, radiator.

Kitchen 10'4" x 8'7" (3.15 x 2.62)



Fitted with a range of base and wall cupboards with tiled splash backs, stainless steel sink unit, gas hob and electric oven with extractor above, space for washing machine and fridge/freezer, radiator, tiled floor, concealed wall mounted gas boiler, double glazed window to side.

First Floor Landing



Attic access, radiator.

Bedroom 1 12'4" x 8'7" (3.78 x 2.62)



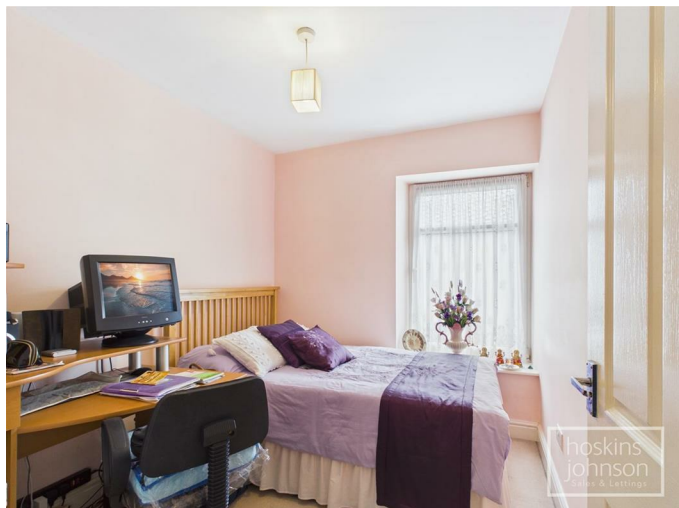
Double glazed window to front, radiator, fitted wardrobes.

Bedroom 2 10'4" x 9'0" (3.15 x 2.75)



Double glazed window to rear, radiator, fitted wardrobes.

Bedroom 3 9'2" x 7'7" (2.81 x 2.33)



Double glazed window to front, radiator.

Shower Room



Outside

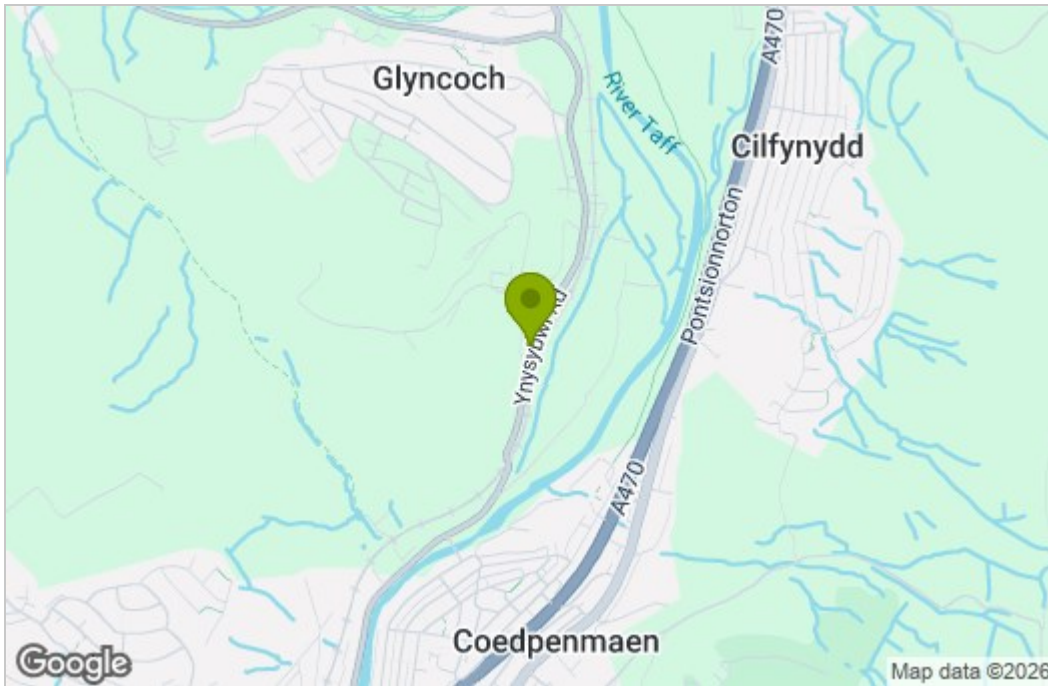


Located on a large end plot with excellent size gardens, mainly laid to lawns with bushes and shrubs, plenty of off road parking and outside shower/wc.

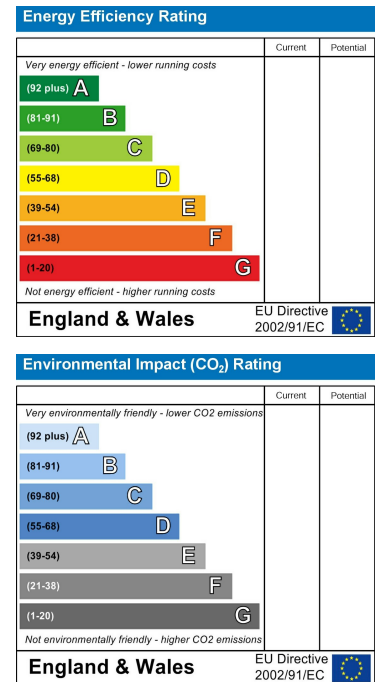
Floor Plan



Area Map



Energy Efficiency Graph



These particulars, whilst believed to be accurate are set out as a general outline only for guidance and do not constitute any part of an offer or contract. Intending purchasers should not rely on them as statements of representation of fact, but must satisfy themselves by inspection or otherwise as to their accuracy. No person in this firm's employment has the authority to make or give any representation or warranty in respect of the property.

22 Market Street, Pontypridd, CF37 2ST

Tel: 01443 404093 Email: pontypridd@hoskinsjohnson.co.uk www.hoskinsjohnson.co.uk